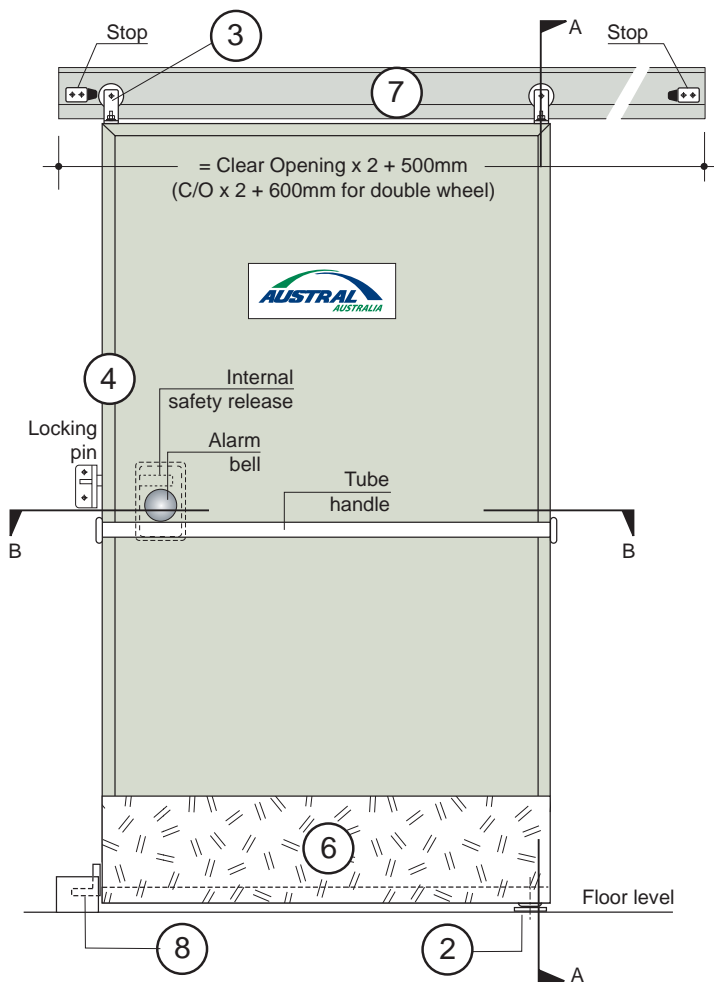
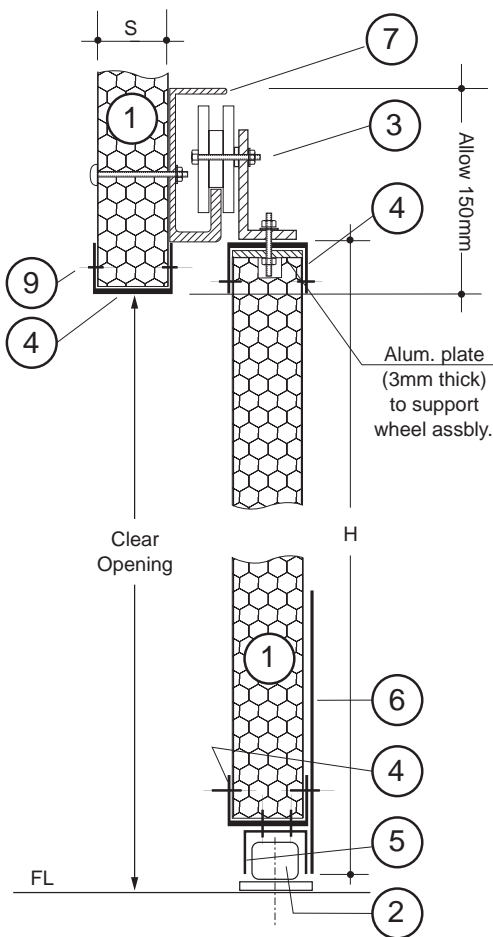


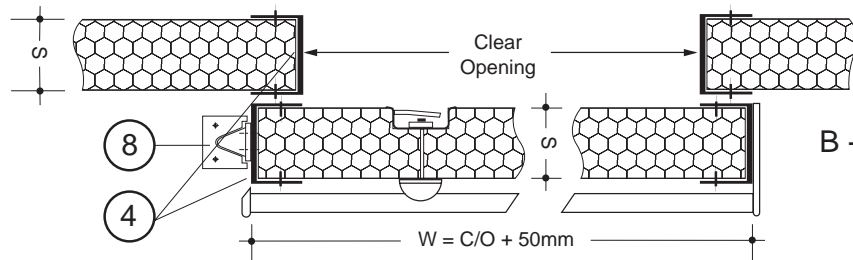
# A.16 EPS CORE INSULATED BUILDINGS



**EXTERNAL VIEW**  
SCALE 1:20



**A - A CROSS SECTION**  
SCALE 1:5



**B - B CROSS SECTION**  
SCALE 1:5

Allow 150mm clearance each side (top & bottom) for Stops & Cone / Locator

|            |                              |                                  |                     |
|------------|------------------------------|----------------------------------|---------------------|
| 1          | ECONOTILT PANEL              | S= ..... mm                      |                     |
| 2          | STAY ROLLER                  | Galv. base, dynabolted to floor  | 1 NYLON ROLLER      |
| 3          | SUPPORT ROLLER ASSEMBLY      | 75mm diam., sealed ball bearings | 2 or 4 NYLON WHEELS |
| 4          | CHANNEL SURROUND             | S x 25 x 2mm                     | ALUMINIUM           |
| 5          | DOOR GUIDE CHANNEL           | 40 x 25 x 2mm                    | ALUMINIUM           |
| 6          | TREAD PLATE                  | W x 300 x 2mm                    | ALUMINIUM           |
| 7          | 'J' TRACK                    | 108 x 40mm x .... metres         | ALUMINIUM           |
| 8          | CONE / LOCATOR               | dynabolted to floor and door     | GALV. BASE          |
| 9          | POP RIVET                    | ..... mm                         |                     |
| <b>POS</b> | <b>ITEM &amp; DIMENSIONS</b> |                                  | <b>MATERIAL</b>     |