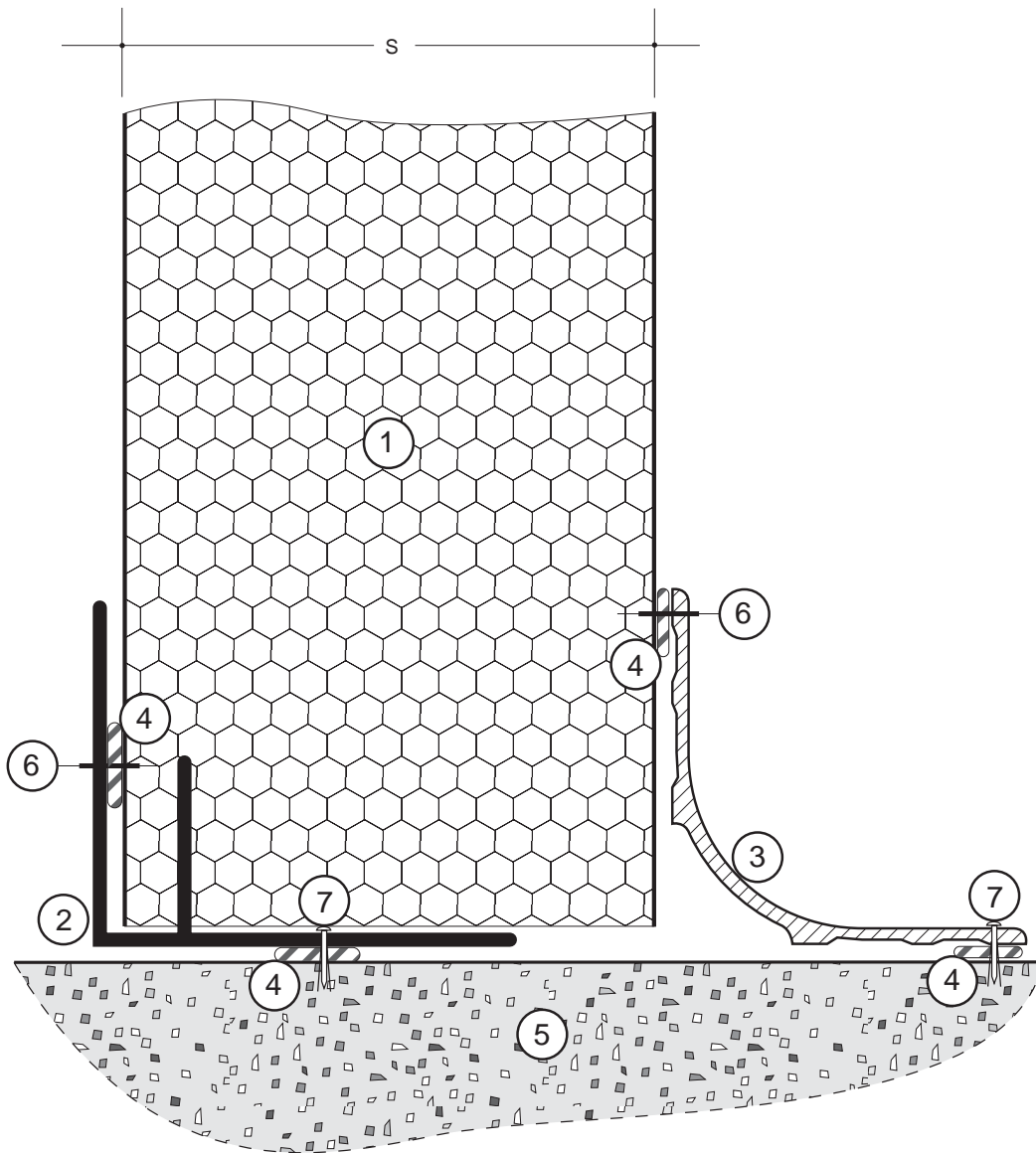


# B.10 EPS CORE REFRIGERATED BUILDINGS



			S	75	100	125	150	200
1	ECONOTILT PANEL	S= ..... mm						
2	'F' MOULD SECTION	60 x 48 x 2mm						ALUMINIUM
3	COVING	50 x 50 x 2mm						ALUMINIUM
4	SEALANT	continuous bead						NON-SETTING FLEXIBLE
5	CONCRETE BASE							
6	POP RIVET	..... mm @ 600mm ctrs.						
7	DRIVE NAIL	..... mm @ 600mm ctrs.						
<b>POS</b>	<b>ITEM &amp; DIMENSIONS</b>		<b>MATERIAL</b>					



## Econotilt™ Panel WALL TO FLOOR DETAIL

18.10.01  
SCALE  
1:1