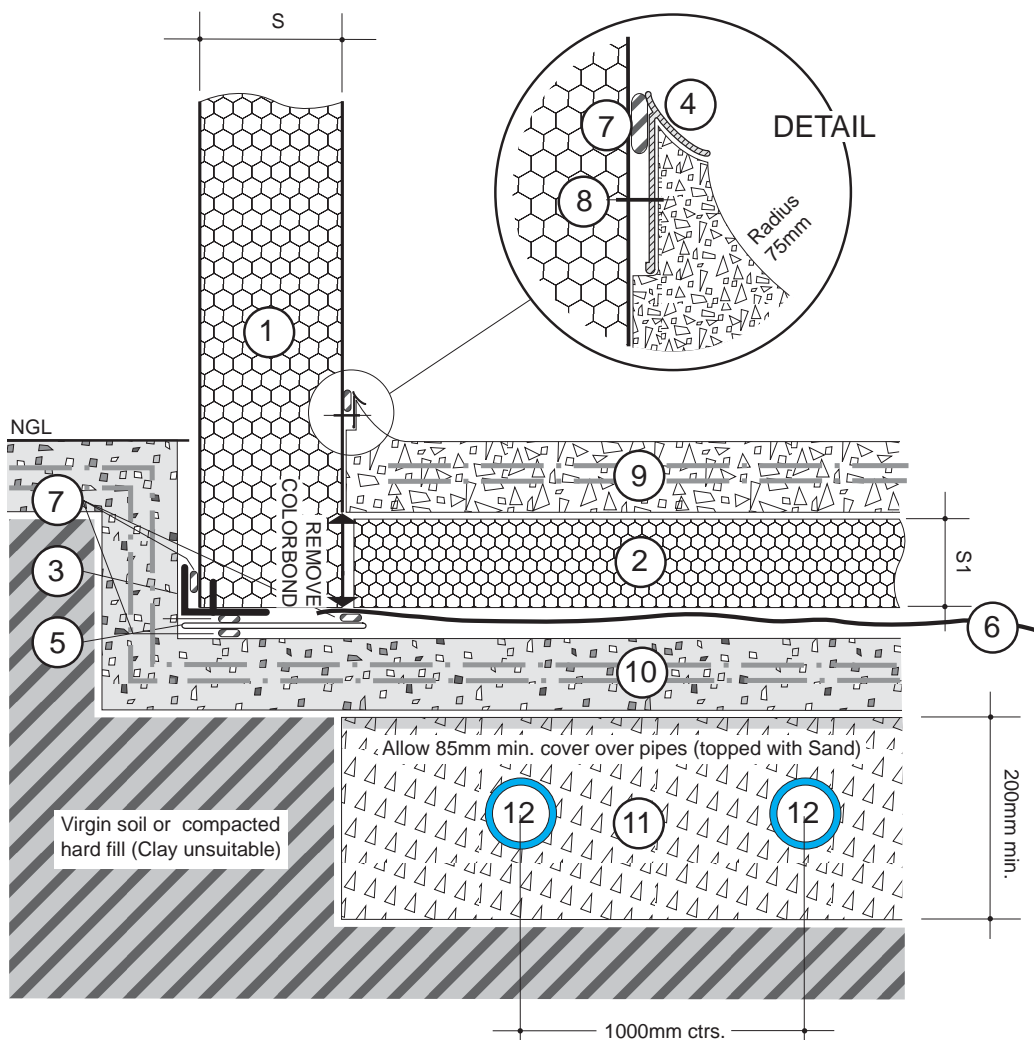


# B.20 EPS CORE REFRIGERATED BUILDINGS



**Note**  
 Ventilation pipes: 12  
 laid with 1 in 25 fall across floor into drain  
 and vermin proofed at each end.  
 Material to be PVC agricultural drain pipe.

S1	50	75	100	125	150
S	100	125	150	200	250

POS	ITEM & DIMENSIONS	MATERIAL
1	ECONOTILT PANEL S= ..... mm	
2	INSULATED FLOOR PANEL S1= ..... mm	
3	'F' MOULD SECTION 60 x 48 x 2mm	ALUMINIUM
4	COVING 51 x 18 x 2mm	ALUMINIUM
5	VAPOUR BARRIER 250um tube to perimeter	POLYTUBE
6	VAPOUR BARRIER 200um thickness	POLYTHENE FILM
7	SEALANT continuous bead	NON-SETTING FLEXIBLE
8	POP RIVET ..... mm @ 600mm ctrs.	
9	REINFORCED WEAR SLAB	CONCRETE
10	REINFORCED SLAB	CONCRETE
11	COARSE AGGREGATE 50 - 75 well compacted	BLUESTONE
12	VENTILATION PIPE 100mm diam.	PVC