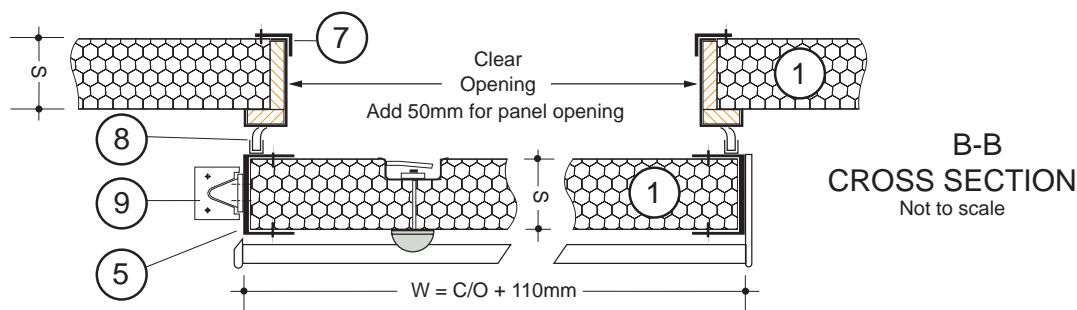
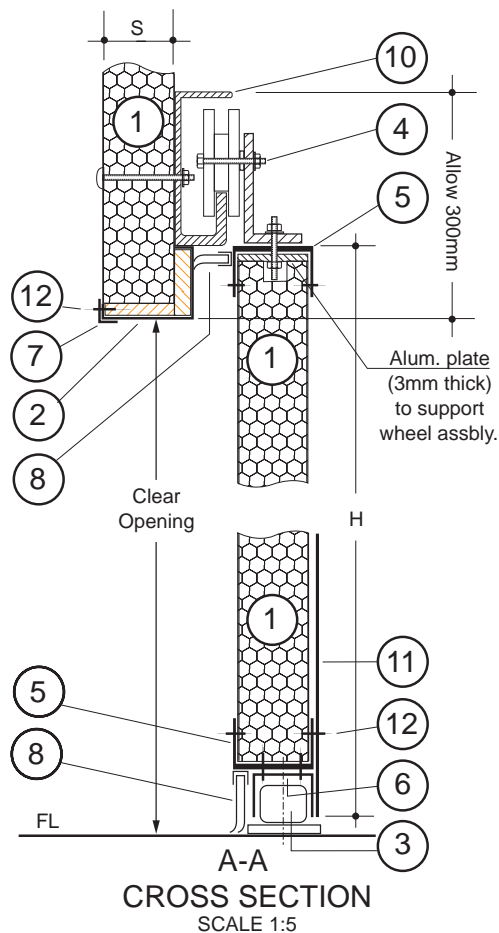
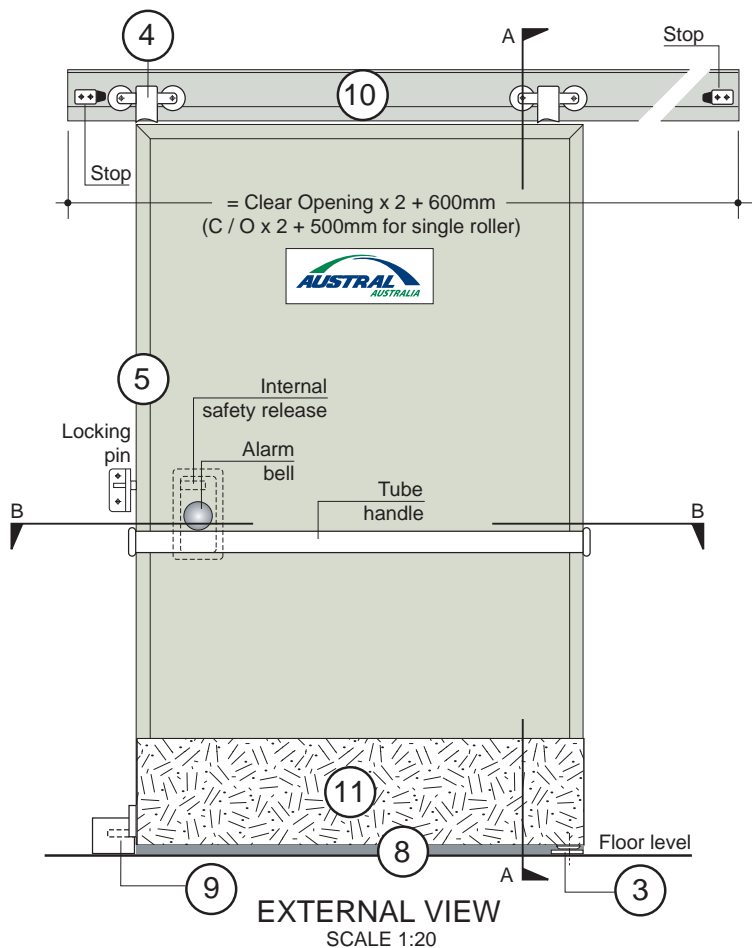


B.27 EPS CORE REFRIGERATED BUILDINGS



Allow 150mm clearance each side (top & bottom) for Stops & Cone / Locator

1	ECONOTILT PANEL	S= mm	
2	DOOR FRAME	Colorbond sheet steel over 19mm Marine (8) ply frame	
3	STAY ROLLER	Galv. base dynabolted to floor	1 NYLON ROLLER
4	SUPPORT ROLLER ASSEMBLY	75mm diam., sealed ball bearings	2 or 4 NYLON WHEELS
5	CHANNEL SURROUND	S x 25 x 2mm	ALUMINIUM
6	DOOR GUIDE CHANNEL	40 x 25 x 2mm	ALUMINIUM
7	ANGLE	50 x 25 x 2mm	ALUMINIUM
8	WIPER SEAL	atchd. to face (3 sides) & base	FOLDED RUBBER
9	CONE & LOCATOR	dynabolted to floor / door	GALV. BASE
10	'J' TRACK	108 x 40mm x metres	ALUMINIUM
11	TREAD PLATE	W x 300 x 2mm	ALUMINIUM
12	POP RIVET mm	
POS	ITEM & DIMENSIONS		MATERIAL