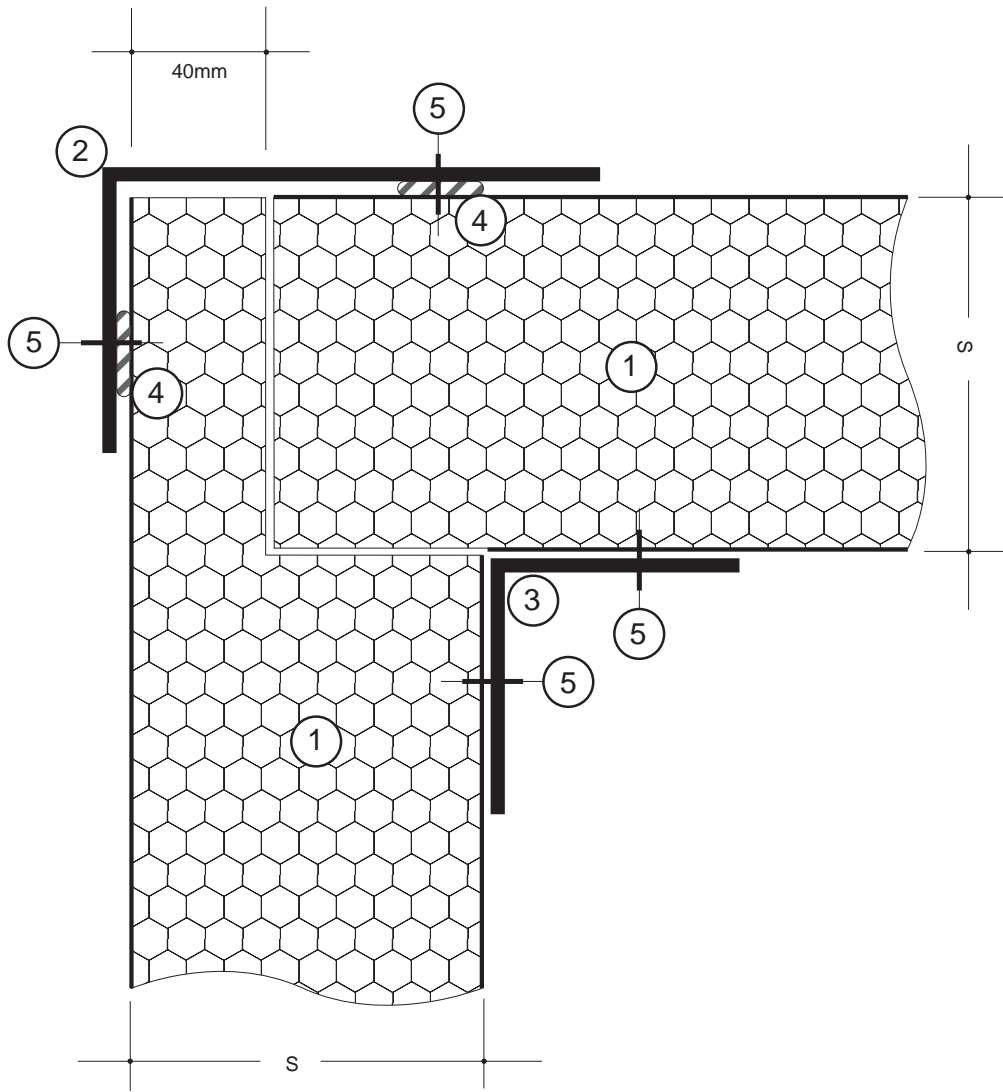


# B.5 EPS CORE REFRIGERATED BUILDINGS



			S	75	100	125	150
1	ECONOTILT PANEL	S= ..... mm					
2	ANGLE	70 x 40 x 2mm					ALUMINIUM
3	ANGLE	35 x 35 x 2mm					ALUMINIUM
4	MASTIC	continuous bead					NON-SETTING FLEXIBLE
5	POP RIVET	..... mm @ 300mm ctrs.					
<b>POS</b>	<b>ITEM &amp; DIMENSIONS</b>						<b>MATERIAL</b>



**Econotilt™ Panel  
REBATED  
WALL TO CEILING JOINT**

06.12.01  
SCALE  
1:1